

Encore LP5 IP



Light Efficiency:

42 Lumen/Watt

Light Quality:

CRI: 58.4

Color Temperature:

4396 K

Output: 1061 lm

Peak: 3936 cd

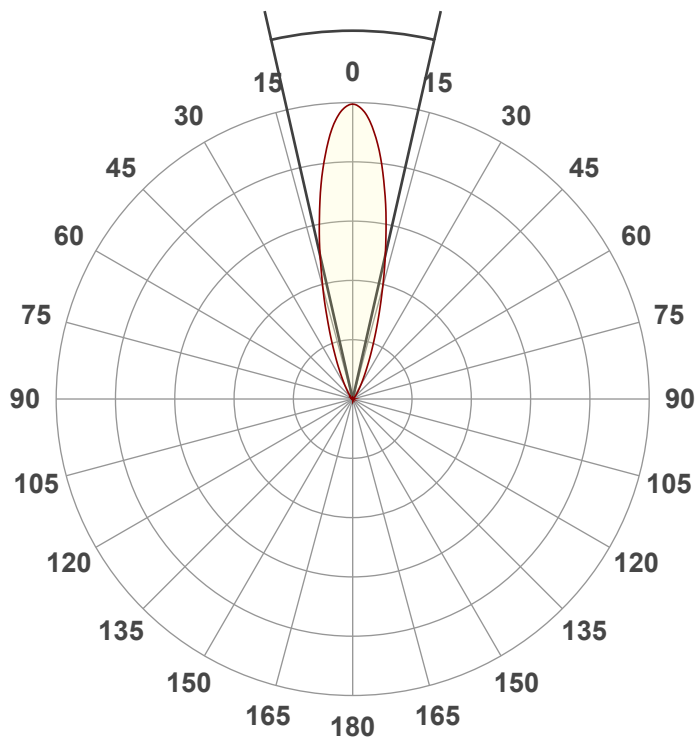
Power: 25.5 W

PF: 0.59



Beam Angle

25.6°



Test:

Lime

Date:

1/12/2022

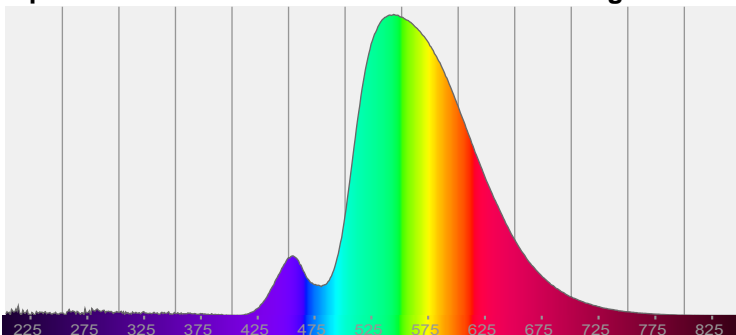
Note:



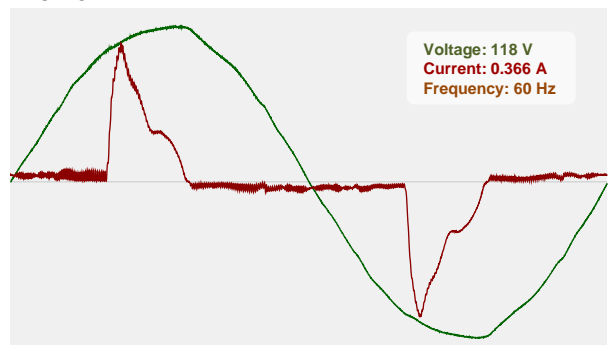
CIE 1931
x: 0.393
y: 0.510

Spectra

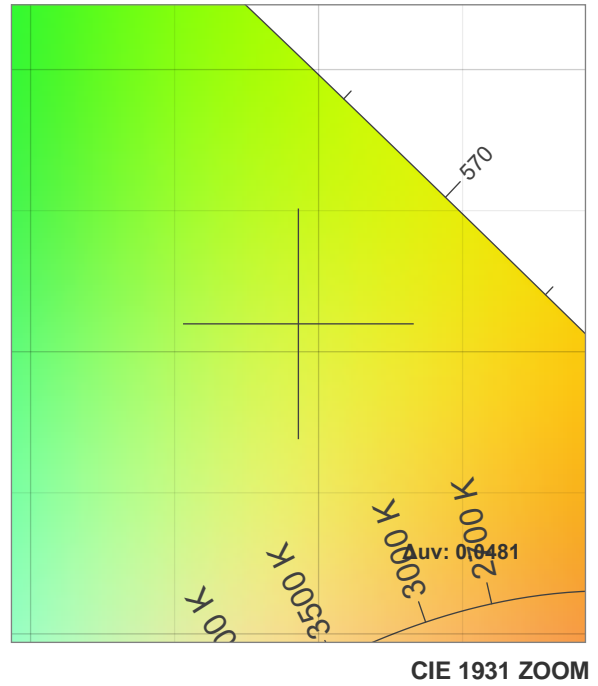
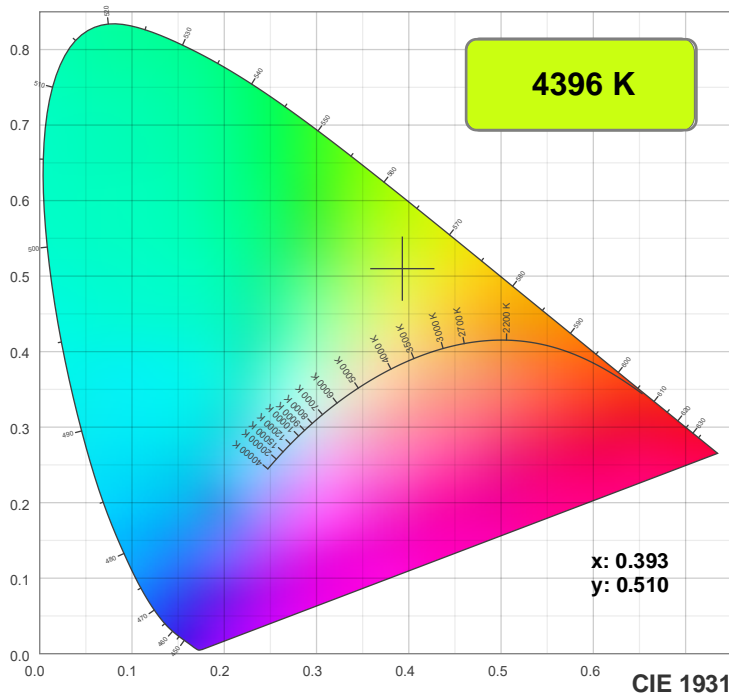
Dominant Wavelength: 567nm



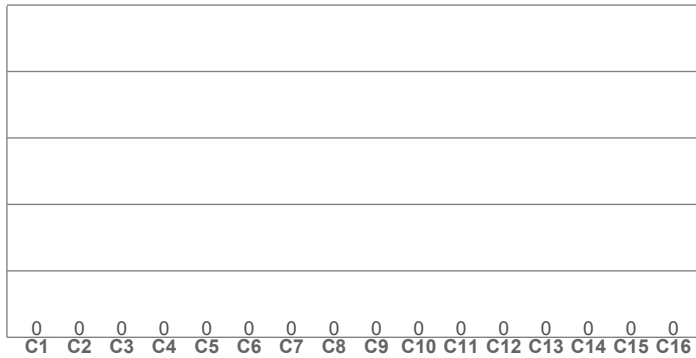
Power



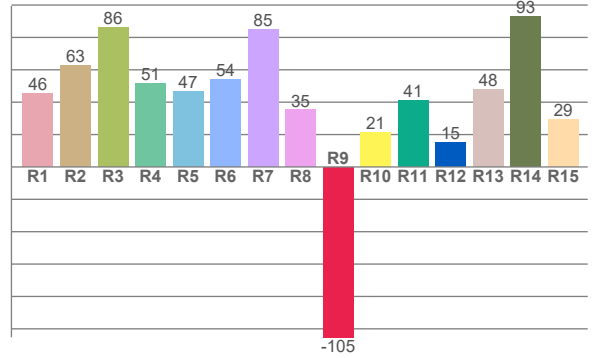
Color Details



TM30: 0.0



CRI: 58.4 (R1-R8)



CRI R values, only R1-R8 are used to calculate final CRI value

R1	R2	R3	R4	R5	R6	R7	R8	R9	R10	R11	R12	R13	R14	R15
45.6	62.8	86.1	51.4	46.6	54.3	85.0	35.2	-105.2	21.2	41.1	15.1	47.9	93.0	29.2

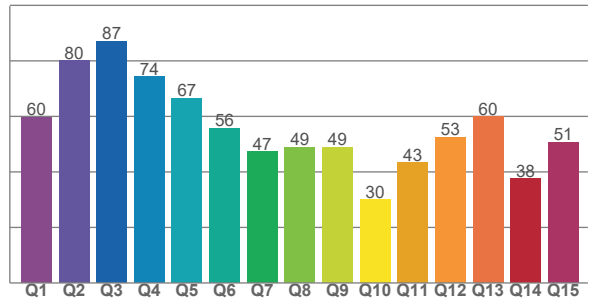
TM30 C values, 16 binned values out of total of 99 C values

C1	C2	C3	C4	C5	C6	C7	C8	C9	C10	C11	C12	C13	C14	C15	C16
0.0	0.0	0.0	0.0	0.0	0.0	0.0	0.0	0.0	0.0	0.0	0.0	0.0	0.0	0.0	0.0

CQS Q values

Q1	Q2	Q3	Q4	Q5	Q6	Q7	Q8	Q9	Q10	Q11	Q12	Q13	Q14	Q15
59.8	80.0	87.1	74.3	66.6	55.8	47.2	49.0	48.9	29.9	43.3	52.5	60.0	37.7	50.7

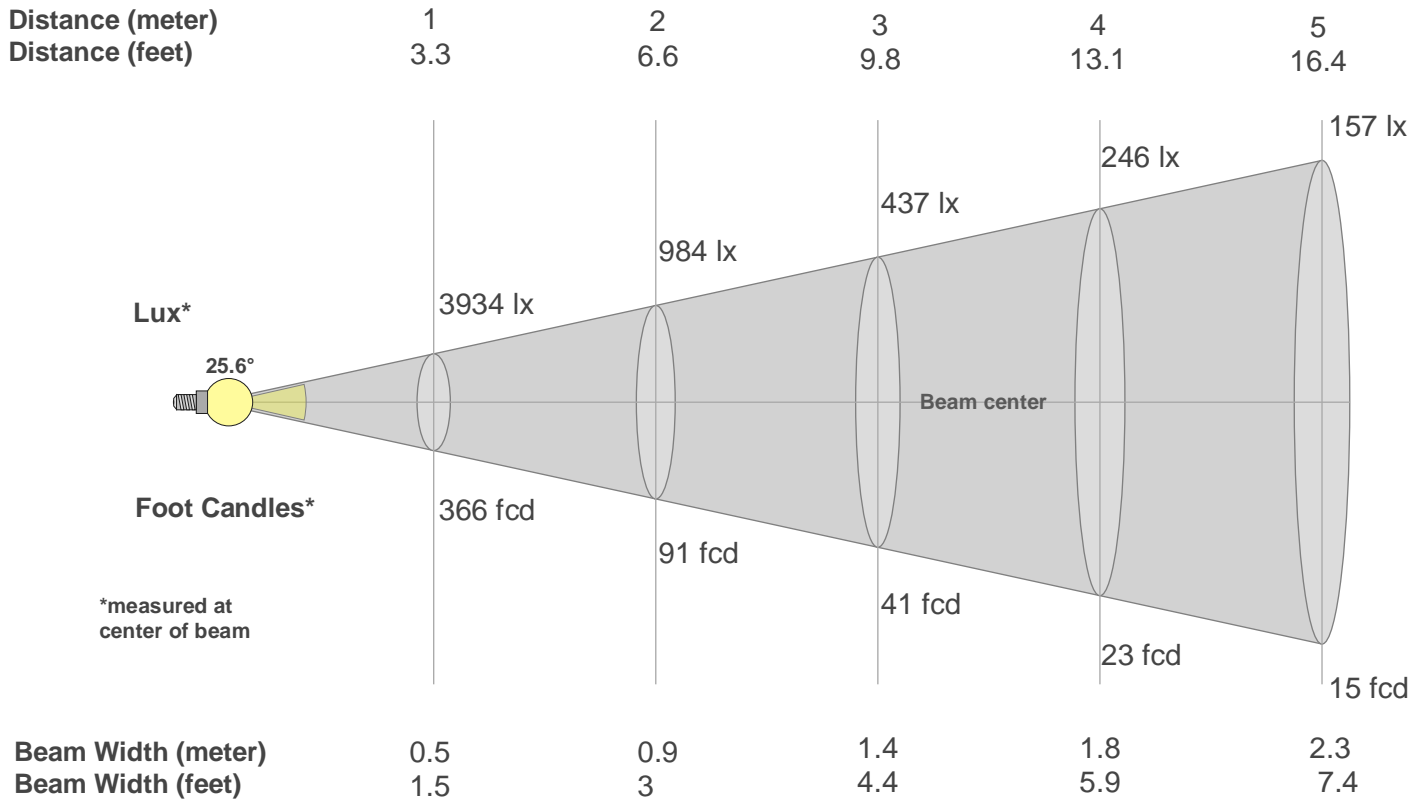
CQS: 53.6



Color Parameters

Color Temperature	Color Rendering Index	Red Component	Color Fidelity	Color Gamut	Color Quality Scale	Color Coordinate CIE 1931	Color Coordinate CIE 1931	Color Coordinate	Color Coordinate	Color Deviation from Black Body
CCT	CRI	CRI R9	TM30 Rf	TM30 Rg	CQS	x	y	u	v	Δuv
4396 K	58.4	-105.2	0.0	n/a	53.6	0.393	0.510	0.189	0.367	0.0481

Beam Details



Beam Intensities from 1-20m

m	1	2	3	4	5	6	7	8	9	10	11	12	13	14	15	16	17	18	19	20
ft	3.3	6.6	9.8	13.1	16.4	19.7	23	26.2	29.5	32.8	36.1	39.4	42.7	45.9	49.2	52.5	55.8	59.1	62.3	65.6
lx	3934	984	437	246	157	109	80	61	49	39	33	27	23	20	17	15	14	12	11	10
fcd	365.5	91.4	40.6	22.8	14.6	10.2	7.5	5.7	4.5	3.7	3	2.5	2.2	1.9	1.6	1.4	1.3	1.1	1	0.9

Intensities in 0° C-plane

0°	2°	4°	6°	8°	10°	12°	14°	16°	18°	20°	22°	24°	26°	28°	30°	32°	34°	36°	38°
3934	3865	3668	3352	2974	2548	2133	1723	1374	1064	820	621	471	353	268	203	155	123	96	73
100%	98%	93%	85%	76%	65%	54%	44%	35%	27%	21%	16%	12%	9%	7%	5%	4%	3%	2%	2%

Intensities in 90° C-plane

0°	2°	4°	6°	8°	10°	12°	14°	16°	18°	20°	22°	24°	26°	28°	30°	32°	34°	36°	38°
3934	3865	3668	3352	2974	2548	2133	1723	1374	1064	820	621	471	353	268	203	155	123	96	73
100%	98%	93%	85%	76%	65%	54%	44%	35%	27%	21%	16%	12%	9%	7%	5%	4%	3%	2%	2%

Intensities in 180° C-plane

0°	2°	4°	6°	8°	10°	12°	14°	16°	18°	20°	22°	24°	26°	28°	30°	32°	34°	36°	38°
3934	3859	3656	3350	2965	2552	2126	1736	1378	1081	834	640	486	371	283	218	169	132	104	83
100%	98%	93%	85%	75%	65%	54%	44%	35%	27%	21%	16%	12%	9%	7%	6%	4%	3%	3%	2%

Intensities in 270° C-plane

0°	2°	4°	6°	8°	10°	12°	14°	16°	18°	20°	22°	24°	26°	28°	30°	32°	34°	36°	38°
3934	3859	3656	3350	2965	2552	2126	1736	1378	1081	834	640	486	371	283	218	169	132	104	83
100%	98%	93%	85%	75%	65%	54%	44%	35%	27%	21%	16%	12%	9%	7%	6%	4%	3%	3%	2%

Beam Angle 50%	Field Angle 10%	Cutoff Angle 2,5%	Intensity Ratio in 120° Cone	Intensity Ratio in 90° Cone
25.6°	50.8°	72.4°	99.1%	96.3%